

OLYMPUS

Your Vision, Our Future

ENDOSCOPE OVERVIEW 2017/2018



IMAGINE...

Your Thumb Could
Maximize ADR

Explore the evidence at: [▶ www.olympus.eu/proven](http://www.olympus.eu/proven)

EVIS EXERA III

MEDICAL ENDOSCOPES

Medical Video Endoscopes

	Insertion Tube OD (mm)	Distal End OD (mm)	Channel ID (mm)	Bending (Up/Down)	Bending (Left/Right)	Working Length (mm)	Field of View	Depth of Field (mm)	NBI	Comments
Video Gastrosopes										
GIF-HQ190*	9.9	9.9	2.8	210°/90°	100°/100°	1030	140°	2 – 6 (near) 5 – 100	✓	DF, OT, WJ, HDTV
GIF-H190*	9.2	9.2	2.8	210°/90°	100°/100°	1030	140°	2 – 100	✓	CF, OT, WJ, HDTV
GIF-1TH190*	10.9	10.0	3.7	210°/90°	100°/100°	1030	140°	2 – 100	✓	CF, OT, WJ, HDTV
GIF-XP190N*	5.8	5.4	2.2	210°/90°	100°/100°	1100	140°	3 – 100	✓	OT, HF compatible
GIF-H290Z*	9.6	9.9	2.8	210°/90°	100°/100°	1030	95° (tele) 140°	1.5 – 3 (tele) 7 – 100	✓	Zoom, OT, WJ, HDTV
GIF-H185*	9.2	9.2	2.8	210°/90°	100°/100°	1030	140°	2 – 100	✓	CF, OT, HDTV
GIF-N180	4.9	4.9	2.0	210°/120°	–	1100	120°	3 – 100	✓	SlimSIGHT
GIF-2TH180**	12.6	12.2	2.8/3.7	210°/90°	100°/100°	1030	140°	2 – 100	✓	HDTV
GIF-XTQ160	12.9	12.9	6.0	200°/90°	100°/100°	1030	140°	3 – 100	–	–
GIF-FQ260Z**	10.5	11.0	2.8	210°/90°	100°/100°	1030	60° (tele) 140°	2 – 3.5 (tele) 7 – 100	✓	AFI
Video Duodenoscopes										
TJF-Q180V	11.3	13.7	4.2	120°/90°	90°/110°	1240	100°/5° (retro)	5 – 60	✓	V-System
Video Choledochoscope										
CHF-V**	5.2	4.9	2.0	160°/130°	–	380	120°	3 – 50	✓	–

*with CV-190 only **with CV-180 or higher ***with CV-160 or higher

****with EC-10 ENDOCAPSULE system only

•with CV-290 only ••with CV-290/-260SL only

•••with CV-290/-260SL/-240/-200 only

OT = One-touch Connector DF = Dual Focus CF = Close Focus
WJ = WaterJet RIT = Responsive Insertion Technology SG = ScopeGuide
VS = Variable Stiffness

MEDICAL ENDOSCOPES

	Insertion Tube OD (mm)	Distal End OD (mm)	Channel ID (mm)	Bending (Up/Down)	Bending (Left/Right)	Working Length (mm)	Field of View	Depth of Field (mm)	NBI	Comments
Video Colonoscopes										
CF-HQ190I/L*	12.8	13.2	3.7	180°/180°	160°/160°	1330/1680	160° (near) 170°	2 – 6 (near) 5 – 100	✓	DF, OT, RIT, SG, WJ, HDTV
CF-H190I/L*	12.8	13.2	3.7	180°/180°	160°/160°	1330/1680	170°	2 – 100	✓	CF, OT, RIT, WJ, HDTV
PCF-H190DI/L*	11.8	11.7	3.2	180°/180°	160°/160°	1330/1680	170°	2 – 100	✓	CF, OT, RIT, SG, WJ, HDTV
PCF-H190I/L*	11.5	11.7	3.2	180°/180°	160°/160°	1330/1680	170°	2 – 100	✓	CF, OT, RIT, WJ, HDTV
PCF-PH190I/L*	9.5	9.7	3.2	180°/180°	160°/160°	1330/1680	140°	2 – 100	✓	CF, OT, RIT (HFT, PB), HDTV
CF-HQ290ZL/I*	12.8	13.2	3.7	180°/180°	160°/160°	1680/1330	90° (tele) 170°	2 – 3 (tele) 7 – 100	✓	OT, RIT, WJ, HDTV, Zoom
CF-H185I/L*	12.8	12.8	3.7	180°/180°	160°/160°	1330/1680	140°	2 – 100	✓	CF, OT, VS, WJ, HDTV
CF-2T160I/L	13.7	13.8	3.7/3.2	180°/180°	160°/160°	1330/1680	140°	3 – 100	–	–
CF-FH260AZI/L**	13.2	14.8	3.2	180°/180°	160°/160°	1330/1680	80° (tele) 140°	2 – 3 (tele) 7 – 10	✓	AFI
Video Enteroscope										
SIF-Q180	9.2	9.2	2.8	180°/180°	160°/160°	2000	140°	3 – 100	✓	–
Capsule Endoscope										
EC-S10****	11.0	11.0	–	–	–	26	160°	0 – 20	–	–

*with CV-190 only **with CV-180 or higher ***with CV-160 or higher

****with EC-10 ENDOCAPSULE system only

•with CV-290 only ••with CV-290/-260SL only

•••with CV-290/-260SL/-240/-200 only

OT = One-touch Connector DF = Dual Focus CF = Close Focus
WJ = WaterJet RIT = Responsive Insertion Technology SG = ScopeGuide
VS = Variable Stiffness

MEDICAL ENDOSCOPES

	Insertion Tube OD (mm)	Distal End OD (mm)	Channel ID (mm)	Bending (Up/Down)	Rotation Function (Left/Right)	Working Length (mm)	Field of View	Depth of Field (mm)	NBI	Comments
Video Bronchoscopes										
BF-1TH190*	6.0	6.2	2.8	180°/130°	120°/120°	600	120°	3 – 100	✓	HDTV, OT
BF-H190*	5.1	5.5	2.0	210°/130°	120°/120°	600	120°	3 – 100	✓	HDTV, OT
BF-Q190*	4.9	4.8	2.0	210°/130°	120°/120°	600	120°	3 – 100	✓	OT
BF-P190*	4.1	4.2	2.0	210°/130°	120°/120°	600	110°	2 – 50	✓	OT
BF-XP190*	2.8	3.1*	1.2	210°/130°	120°/120°	600	110°	2 – 50	✓	OT
BF-1T180	6.0	6.0	3.0	180°/130°	–	600	120°	3 – 100	✓	–
BF-Q180-AC	5.3	5.5	2.0	180°/130°	–	600	120°	3 – 100	✓	Autoclavable
BF-P180	4.9	4.9	2.0	180°/130°	–	600	120°	3 – 100	✓	–
BF-XT160***	6.3	6.2	3.2	180°/130°	–	600	120°	3 – 100	–	–
BF-1T260***	6.0	5.9	2.8	180°/130°	–	600	120°	3 – 100	–	–
BF-F260**	5.4	5.5	2.0	180°/130°	–	600	120°	3 – 100	–	AFI
BF-260***	4.9	4.9	2.0	180°/130°	–	600	120°	3 – 100	–	–
Video Pleuroscope (Medical Thoracoscopy)										
LTF-160	7.0	7.0	2.8	160°/130°	–	270	120°	3 – 100	–	Autoclavable

*with CV-190 only **with CV-180 or higher ***with CV-160 or higher

****with EC-10 ENDOCAPSULE system only

•with CV-290 only ••with CV-290/-260SL

•••with CV-290/-260SL/-240/-200 only ♦tapered part of distal end 2.9 mm

OT = One-touch Connector DF = Dual Focus CF = Close Focus

WJ = WaterJet RIT = Responsive Insertion Technology SG = ScopeGuide

VS = Variable Stiffness

MEDICAL ENDOSCOPES

Medical Fiber Endoscopes

	Insertion Tube OD (mm)	Distal End OD (mm)	Channel ID (mm)	Bending (Up/Down)	Bending (Left/Right)	Working Length (mm)	Field of View	Depth of Field (mm)	Comments
Gastrointestinal Fiberscopes									
CF-E3I/L	12.9	13.8	3.2	180°/180°	160°/160°	1330/1680	140°	5 – 100	–
GIF-E3	9.8	9.8	2.8	210°/90°	100°/100°	1025	120°	3 – 100	–
CHF-BP30	3.4	3.1	1.2	160°	130°	1870	90°	1 – 50	Baby scope
Fiber Bronchoscopes									
BF-1T60	6.0	5.9	3.0	180°/130°	–	600	120°	3 – 50	–
BF-P60	5.0	4.9	2.2	180°/130°	–	600	120°	3 – 50	–
BF-XP60	2.8	2.8	1.2	180°/130°	–	600	90°	2 – 50	–
BF-3C40	3.6	3.3	1.2	180°/130°	–	550	120°	3 – 50	–
BF-N20	2.2	1.8	–	160°/90°	–	550	75°	2 – 50	–
BF-TE2	6.0	5.9	2.8	180°/130°	–	600	120°	3 – 50	–
BF-PE2	5.0	4.9	2.2	180°/130°	–	600	120°	3 – 50	–

ENDOSCOPY INTEGRATION

Olympus provides the total integration solution for endoscopy, consisting of modular components that are combined to meet the individual needs of the hospital. Utmost support is ensured throughout the workflow from patient reception to the examination, via the reprocessing and recovery areas, ending in the doctor's office and training room facilities.



Examination Room

A high level of ergonomics, efficiency, and communication in a modern and friendly ambience.

- Optimized workspace and patient comfort
- Integrated HD documentation system
- Saving space, examination, and cleaning time



Reprocessing Area

Hygiene supports and secures the endoscope's workflow with full traceability and documentation of all relevant reprocessing steps.

- ETD Double and ETD4 washer disinfectors
- EDC Plus Drying and storage cabinets



Recovery Area

Patient comfort and safety in perfection – a central overview of the status of the rooms, support smooth processes and a stressless atmosphere.

- Access to status of endoscopy room
- Patient-care documentation for recovery nurse



Doctor's Office

In the office but with an optimal audio/video connection to the examination rooms. Access from the PC to all data and images and reporting system.

- Access to centralized patient/procedure information
- Audio/video connection to examination rooms
- Tools for activity and cost analysis



Training / Meeting Room

The media center for training, courses, and seminars with advanced video management, including live video and bidirectional communication from examination rooms.

- Access/display of departmental activity information
- IP audio/video routing and multi-display functionality

ENDOSCOPIC ULTRASOUND

Endoscopic Ultrasound									
	Insertion Tube OD (mm)	Channel ID (mm)	Bending (Up/Down Left/Right)	Working Length (mm)	Ultrasound Field of View	Endoscopic Field of View (Forward/Oblique)	Depth of Field (mm)	Frequency (MHz)	Scanning Mode
Ultrasonic Videoscopes for EUS									
GF-UE160-AL5	11.8	2.2	130°/90° 90°/90°	1250	360°	100°/55°	3 – 100	5/6/7.5/10/12*	Electronic 360° radial array
GF-UCT180	12.6	3.7	130°/90° 90°/90°	1250	180°	100°/55°	3 – 100	5/6/7.5/10/12*	Electronic curved linear array
TGF-UC180J	12.6	3.7	180°/90° 90°/90°	1245	90°	120°/0°	3 – 100	5/6/7.5/10/12*	Forward Viewing, electronic curved linear array
Ultrasonic Endoscope for EBUS									
BF-UC180F**	6.3	2.2	120°/90° –	600	60°	80°/35°	2 – 50	5/6/7.5/10/12*	Electronic curved linear array

*with EU-ME2. Please contact your Olympus representative for compatibility with other systems.

** fibervideoscope for best ratio between outer diameter and working channel size

*** equipped with 0.035" guidewire port at the distal end

ENDOSCOPIC ULTRASOUND

	Frequency (MHz)	Working Length (mm)	Insertion Tube OD (mm)	Comp. Biopsy Channel (mm)	Model	Comp. Biopsy Channel (mm)	Scanning Mode
Ultrasonic Miniature Probes							
UM-2R/3R	12/20	2050	2.5	2.8	MH-246R Balloon Sheath	3.7	Mechanical radial
UM-S20-17S	20	2150	max. 1.8	2.0	K-201 / K-202 GuideSheathKit	2.0	Mechanical radial
UM-S20-20R	20	2050	max. 2.0	2.2 [•]	K-203 / K-204 GuideSheathKit	2.6	Mechanical radial
UM-BS20-26R	20	2050	Use only with balloon sheath		MAJ-643R Balloon Sheath	2.8	Mechanical radial
UM-G20-29R***	20	2050	max. 2.9	3.2	Not used with balloon sheath		Mechanical radial
UM-DG20-31R***	20	2050	max. 3.1	3.7	Not used with balloon sheath		Mechanical helical for Dual Plane Reconstruction (DPR)
UM-DP12-25R	12	2050	2.5	2.8	Not used with balloon sheath		Mechanical helical for Dual Plane Reconstruction (DPR)
UM-DP20-25R	20	2050	2.5	2.8	Not used with balloon sheath		Mechanical helical for Dual Plane Reconstruction (DPR)

*with EU-ME2. Please contact your Olympus representative for compatibility with other systems.

** fiberolescope for best ratio between outer diameter and working channel size

*** equipped with 0.035" guidewire port at the distal end

[•] 2.0 mm in bronchoscopes

SURGICAL ENDOSCOPES

Surgical Video Endoscopes

	Insertion Tube OD (mm)	Distal End OD (mm)	Channel ID (mm)	Bending (Up/Down)	Bending (Left/Right)	Working Length (mm)	Direction of View	Field of View	Depth of Field (mm)	NBI	HDTV/SDTV
ENDOEYE Laparoscopes											
ENDOEYE 3D, 10 mm 0°	10.0	10.0	-	-	-	330	0°	57°	25 – 120	✓	HDTV
ENDOEYE 3D, 10 mm 30°	10.0	10.0	-	-	-	335	30°	57°	25 – 120	✓	HDTV
ENDOEYE FLEX 3D, 10 mm	10.0	10.0	-	100°/100°	100°/100°	370	0°	80°	18 – 100	✓	HDTV
ENDOEYE HD II, 10 mm 0°	10.0	10.0	-	-	-	325	0°	90°	21 – 200	✓	HDTV
ENDOEYE HD II, 10 mm 30°	10.0	10.0	-	-	-	330	30°	90°	21 – 200	✓	HDTV
ENDOEYE FLEX, 10 mm	10.0	10.0	-	100°/100°	100°/100°	370	0°	100°	18 – 200	✓	HDTV
ENDOEYE HD II, 5 mm 0°	5.4	5.4	-	-	-	325	0°	90°	21 – 200	✓	HDTV
ENDOEYE HD II, 5 mm 30°	5.4	5.4	-	-	-	330	30°	90°	21 – 200	✓	HDTV
ENDOEYE FLEX, 5 mm	5.4	5.3	-	100°/100°	100°/100°	370	0°	85°	18 – 100	✓	HDTV
Cystoscopes											
CYF-VH/-VHA/-VHR	5.5	2.7	2.2	220°/130°	-	380	0°	120°	3 – 50	✓	HDTV
CYF-V2/VA2	5.4	4.8	2.2	210°/120°	-	380	0°	120°	3 – 50	✓	SDTV
Ureterscopes											
URF-V2	2.8	2.83	1.2	275°/275°	-	670	0°	80°	2 – 50	✓	SDTV
URF-V	3.3	2.8	1.2	180°/275°	-	670	0°	90°	2 – 50	✓	SDTV

All rigid endoscopes are compatible with EXERA III/VISERA ELITE via 3 CCD HD camera heads (HDTV), 1 CCD HD camera heads (HDTV) and via VISERA camera heads (SDTV).

SURGICAL ENDOSCOPES

	Insertion Tube OD (mm)	Distal End OD (mm)	Channel ID (mm)	Bending (Up/Down)	Bending (Left/Right)	Working Length (mm)	Direction of View	Field of View	Depth of Field (mm)	NBI	HDTV/SDTV
Rhinolaryngoscopes											
ENF-VH	3.6	3.9	–	130°/130°	–	300	0°	110°	3 – 50	✓	HDTV
ENF-V3	2.9	2.6	–	130°/130°	–	300	0°	90°	3 – 50	✓	SDTV
ENF-V2	3.4	3.2	–	130°/130°	–	300	0°	90°	5 – 50	✓	SDTV
ENF-VT2	4.9	4.8	2.0	130°/130°	–	365	0°	90°	2 – 40	✓	SDTV
ENF-VQ	3.6	3.9	–	130°/130°	–	300	0°	90°	5 – 50	✓	SDTV
Tracheal Intubation Scope											
LF-V	4.1	3.8	1.2	120°/120°	–	600	0°	120°	3 – 50	–	SDTV

All rigid endoscopes are compatible with EXERA III/VISERA ELITE via 3 CCD HD camera heads (HDTV), 1 CCD HD camera heads (HDTV) and via VISERA camera heads (SDTV).

SURGICAL ENDOSCOPES

Surgical Fiber Endoscopes

	Insertion Tube OD (mm)	Distal End OD (mm)	Channel ID (mm)	Bending (Up/Down)	Bending (Left/Right)	Working Length (mm)	Field of View	Depth of Field (mm)
Cystoscope								
CYF-5/5A	5.5	4.6	2.4	210°/120°	–	380	120°	3 – 50
Ureterscopes								
URF-P6	2.65	1.7	1.2	275°/275°	–	700	90°	2 – 50
URF-P5	2.8	1.77	1.2	180°/275°	–	700	90°	2 – 50
Rhinolaryngoscopes								
ENF-GP	3.6	3.4	–	130°/130°	–	300	85°	5 – 50
ENF-P4	3.6	3.4	–	130°/130°	–	300	85°	2.5 – 50
ENF-XP	2.2	1.8	–	130°/130°	–	300	75°	2.5 – 50
ENF-T3	5.0	4.8	2.2	130°/130°	–	365	85°	5 – 50
Tracheal Intubation Scopes								
LF-P	2.2	1.8	–	120°/120°	–	600	75°	3 – 50
LF-GP	4.1	3.8	1.5	120°/120°	–	600	90°	4 – 50
LF-DP	3.1	3.1	1.2	120°/120°	–	600	90°	3 – 50
LF-TP	5.2	5.1	2.6	180°/130°	–	600	90°	3 – 50
Hysteroscope								
HYF-XP	3.1	3.0	1.2	100°/100°	–	230	100°	2 – 50

All fiber endoscopes are compatible with EXERA III/VISERA ELITE via 3 CCD HD camera heads (HDTV), 1 CCD HD camera heads (HDTV) and via VISERA camera heads (SDTV).

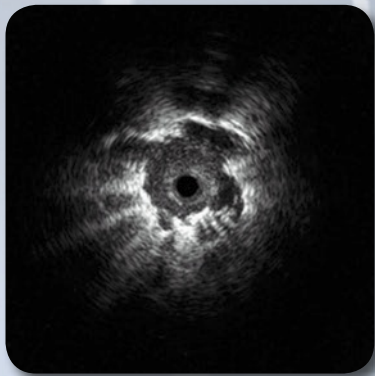
ADVANCING THE ART OF BRONCHOSCOPY

Finding and Sampling of Peripheral Pulmonary Lesions

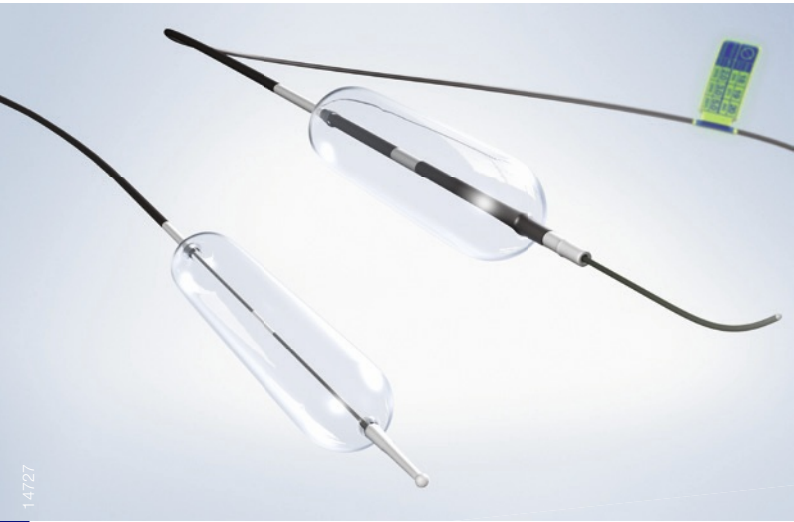
Peripheral Pulmonary Lesion

Real-time confirmation of the lesion through endobronchial ultrasound using an EBUS miniature probe.

Combining EBUS with a GuideSheath enables easy and repeated access to the lesion via sampling devices.



7028



14727

EZDILATE

Multi-Stage Endoscopic Balloon Dilator

EZDilate balloons were specifically designed to meet your needs while setting a higher standard for performance and precision.

- Smooth insertion and navigation to the stricture while protecting sensitive anatomy
- Precise placement and confidence in positioning
- Optimal clarity
- Controlled accurate dilation

The EZDilate 3-stage balloon dilatation catheters are available in a full range of fixed wire and wire-guided size options for use in esophageal, pyloric, colonic, and biliary applications.

 www.et-catalogue.olympus.eu

E0429551EN · 3.000 · 05/17 · OEKG · HB

Subject to change without notice. Liability for errors and omissions excepted.